

Tornex Tower

Effective Smoking Area Control



Innovative Tower design with small footprint and high level suction, works in conjunction with extract system

The Tornex Tower creates a focal point for smokers. It has been designed specifically for use in smoking rooms and works in conjunction with existing extraction systems. It enables a flexible facility to be created for a small number of smokers.

Product Description

The Tornex Tower directly absorbs cigarette smoke and cleans the air before discharging into the air outlet chamber. The Tower works in conjunction with the existing extraction system which allows up to 30% of the air to be exhausted, the remaining cleaned air is released back to atmosphere.



Features

- **Pre-Filter** - A fine mesh removes visible dust
- **Electrical Dust Collector (EDC)** – Electrically charges the smoke and other particles and catches them with a polarised board.
- **Deodorising Filter** – Activated Charcoal filter purifies the smoky air and reduces smells.
- **Twin Centrifugal Fans** – Connected to Direct drive electric motors to draw air through the 3 stage filtration system.
- **Motion Sensor** – The Tower is only operational when presents of people is detected
- **Configurations** – Available in two configurations, Standard and Downflow.

Service & Maintenance

All Tornex installations require regular maintenance for optimum efficiency, Tornex recommend a full after-sales service contract.

Maintenance frequency is dependant on the number of smokers; number of cigarettes smoked and air circulation.

Tornex will advise of the appropriate frequency after the first service.

Options

- Ashtrays & Bins
- Custom Table Top Finishes

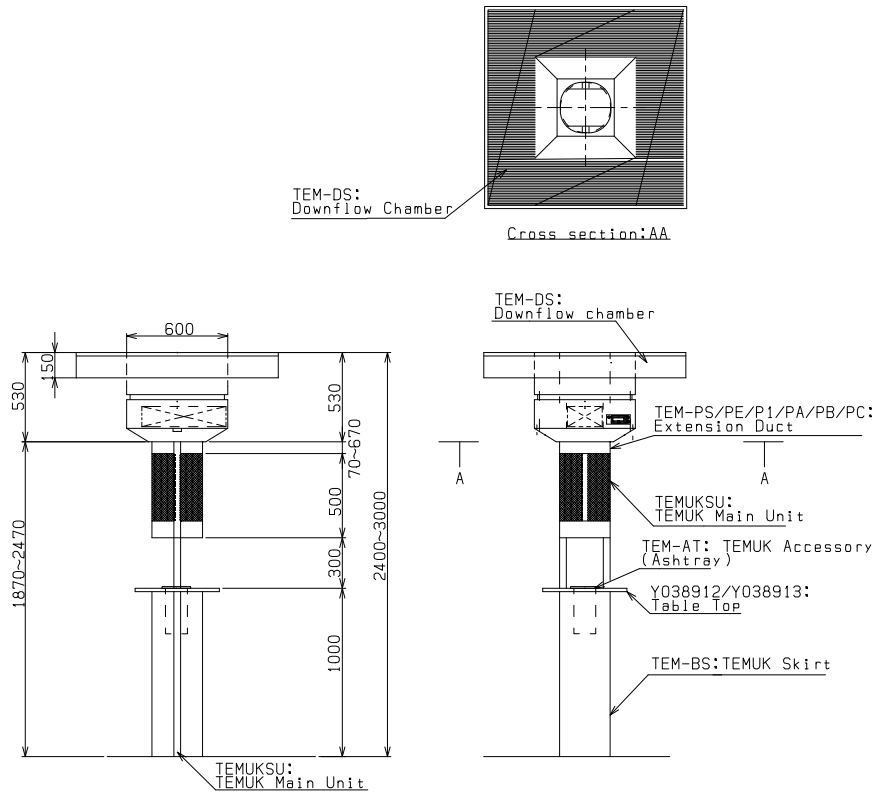
Specification

Tornex Tower		CE	
Models		Downflow	Standard
Dimensions	Width (top)	1200mm	600mm
	Depth (top)	1200mm	600mm
	Height	2400 - 3000mm	
Weight		79Kg	59Kg
Dust Collection Efficiency (DOP Method)		95% (0.3um)	
Processed Air		15 (M ³ /min)	
Exhaust Air		5 (M ³ /min)	
Standard Capacity		4 People	
Electrical Supply		240v /1/ 50Hz	
Electrical Consumption		150W	
Pre Filter		SUS 24 Mesh	
EDC		2 Stage Electrical Dust Collector	
Deodorising Filter		Charcoal	
Material		Body: Steel Melamine Coating	



Tower Configurations

Downflow Tower



Standard Tower

